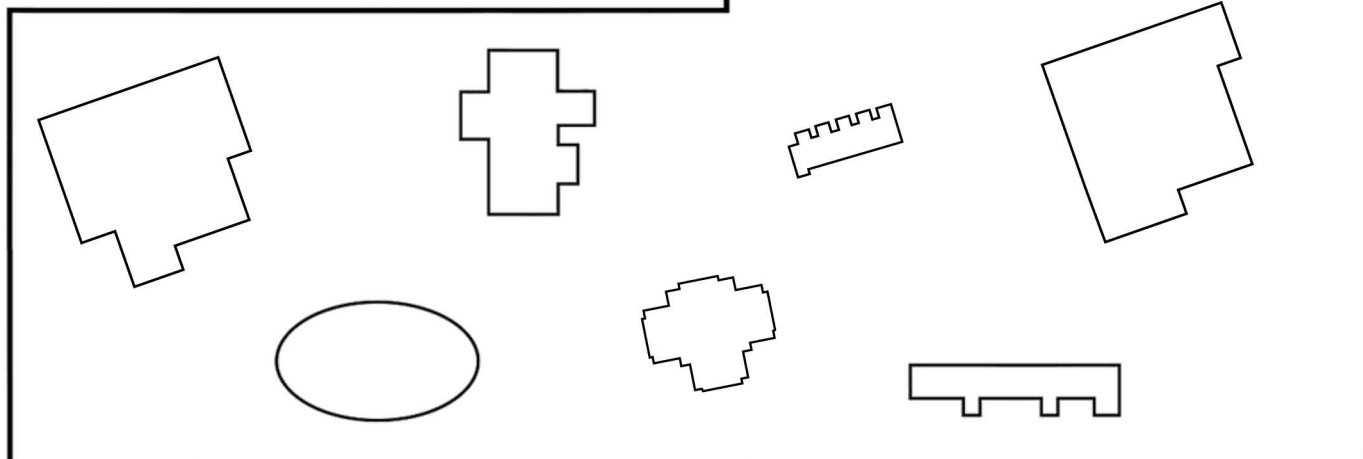


11 Plans on the map

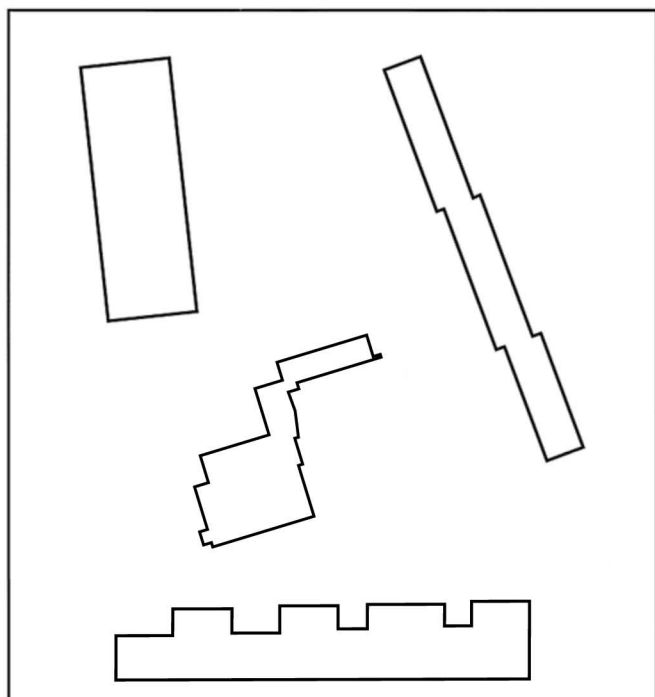
Name

Use photo **F** and map **G** on page 15 to help you.

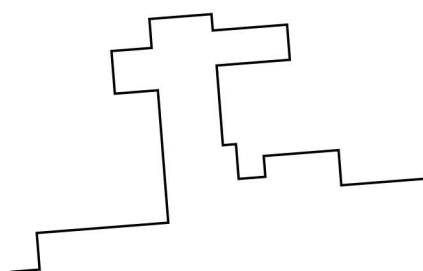
- 1 Look at these plans.
Four of them are features you
can see in **F** and **G**.
They have been drawn larger.
Find which plans they are.
Name them and colour them in.



- 2 The plans below show
features in **F** and **G**.
They have been drawn larger. Find
them.
Name them and colour them in the
colours used on map **G**.



- 3 Part of the shape of Burnt
Mill School has been drawn
below.
Draw in the rest of the shape of the
main building.

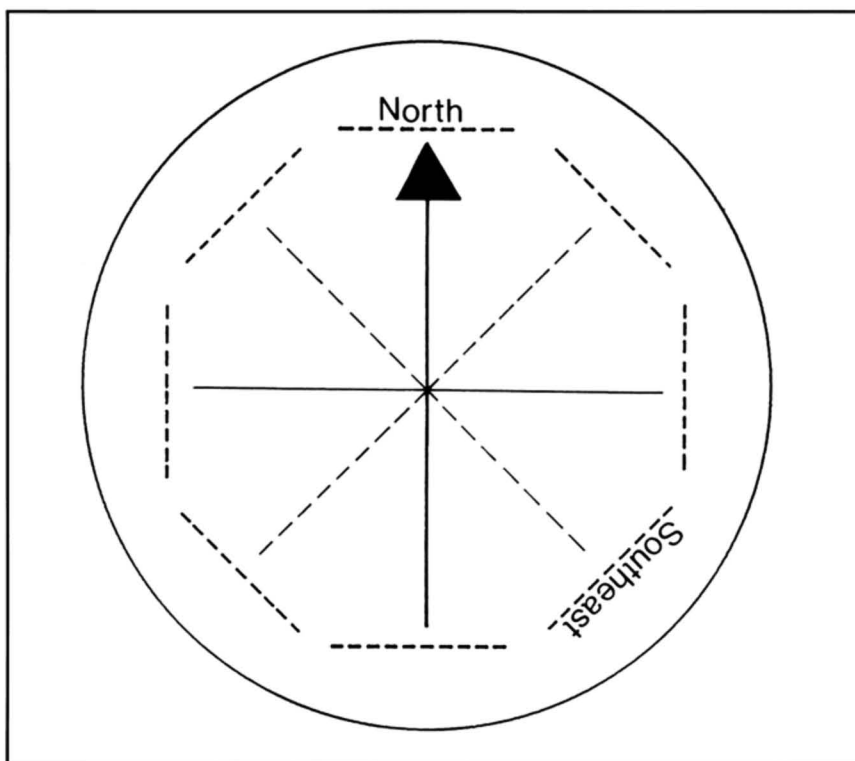


- 1 Make your own compass rose. Write the words for each direction. Two have been done for you.

2 **Naughty**
Elephants
Squirt
Water

This funny sentence helps us to remember the clockwise order of the four compass points. Make up your own funny sentence below:

N _____
E _____
S _____
W _____



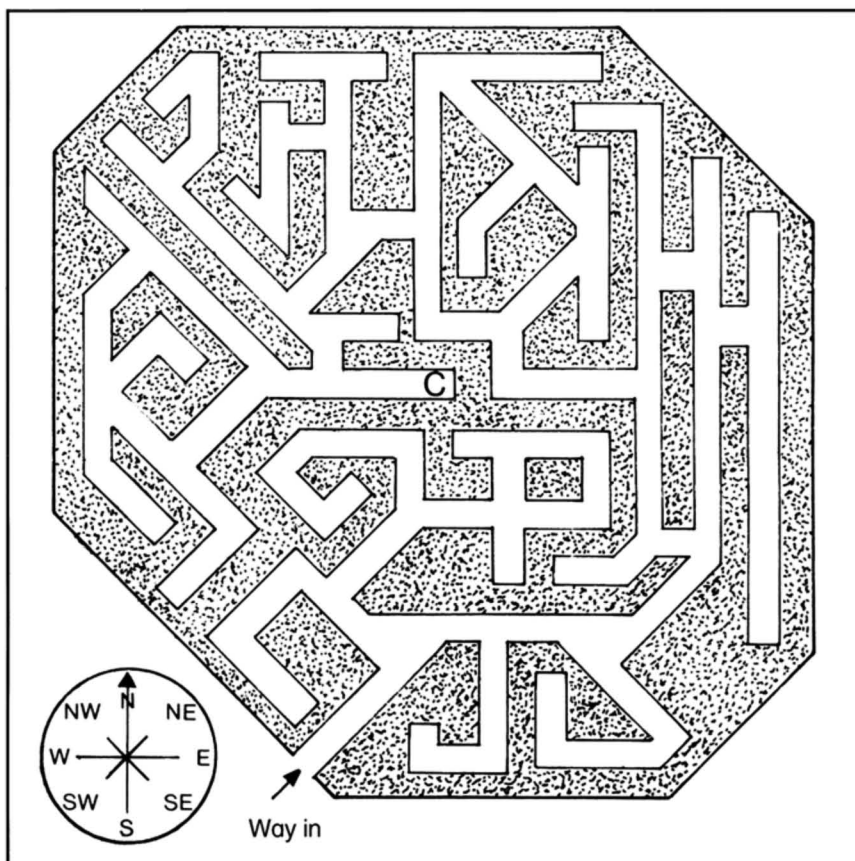
- 3 Can you find the correct way to the centre of the maze? For each set of directions, draw a line from the way into the maze.

In blue go: NE, E, E, NE,
W, N, W, N, NE,
N, NW, NW, S,
W, N, N, E.

In red go: NE, E, E, NE, N,
N, W, S, W, N,
W, N, W, SW,
NW, NE, N, SW.

In green go: NE, E, E, NE, N,
N, W, S, W, N,
W, N, W, SW,
SE, S, E.

- 4 Which colour gets you to the centre? _____



- 1 Cut out along the lines.
Move the pieces around to make a
World map.
Use the map on pages 46 and 47 to
help you.

Stick the pieces onto a piece
of paper.

- 2 Colour the land green and the sea blue.
- 3 Name the land areas and the sea areas.

