

Crafty Ideas: Christmas Angel Art

[Tweet](#) [Pin it](#) [+1](#)



You will need:

- Black paper
- White poster paint
- Craft knife
- White tissue paper
- Strong white card
- Pencils, rulers and scissors
- PVA glue
- Wire cutters
- Thin wire
- Sellotape

A Christmas Angel display, showing 3D figures against a striking monochrome background of stylised angel shapes.

Children enjoy combining painting activities with 3-D modelling, which will give your displays an extra dimension. This activity uses the festive theme of angels, and uses stylised shapes and a monochrome palate to achieve striking results.

Use

In the run up to Christmas, get your children to make a heavenly display of angels.

Make

- ➔ Look at angels depicted in stain glass windows and in many famous paintings for inspiration. Consider the shapes, patterns and colours that are used to depict them.
- ➔ First create the painting. Draw the angel shapes lightly in pencil on the black paper. These are heavily stylised images so use circles for the head and halo, triangles for the arms and body and inverted triangles for the wings. Pour white poster paint straight from the bottle onto the lines on the paper, to create the outline of the angel. Add poured paint patterns inside the angel shape.
- ➔ When the patterns are complete, raise the paper, allowing the poured paint to run and form feathery lines.
- ➔ When the angels are dry, you could use a craft knife to cut out shapes within the pattern. Then, fill the shapes from the back of the painting with white tissue paper to create a translucent effect.
- ➔ As the paint angels are drying, you can start to work on the 3D models. Firstly, cut two triangles from white card.
- ➔ Measure the centre of the base of the triangle and cut a slit at the top and bottom.
- ➔ Now slide the two triangles together.
- ➔ Draw and cut a circle in white card. Find the centre and cut along the radius.
- ➔ Slot into the body using glue if required.
- ➔ Make a halo by drawing round a circle and cutting out the centre. Attach with thin wire to the back of the head using sellotape.

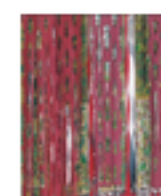
Display

Display the Christmas angel paintings in vertical lines on a pale background. Hang some of the paintings on silver threads in front of the wall display to create a sense of depth and arrange the 3D angels on a tabletop in front of the paintings.

[Print this page](#)

[Send to a friend](#)

More ideas and activities



Christmas Holly Paintings

A festive artwork idea inspired by the colour and shapes



Santa's Weight Problem

Practise weight



Victorian Tree Decorations

Make Christmas tree decorations inspired by the

View On Display books



Belair On Display - Art Inspired by Different Cultures



Belair On Display - Art Inspired by Belief



Belair On Display - The Essential Guide to Primary Display



Belair On Display - Art Inspired by Music