

ICAS

PAPER

D

SAMPLE



# 2018 SUMMER SCIENCE ENGLAND

DO NOT OPEN THIS BOOKLET UNTIL  
INSTRUCTED.

Please check that the answer sheet you have been given has your correct details (name, date of birth).

Use a pencil. Do **NOT** use a coloured pencil or a pen.

Rub out any mistakes completely.

---

You **MUST** record your answers on the **ANSWER SHEET**.

---

Mark only **ONE** answer for each question.

Your score will be the number of correct answers.

Marks are **NOT** deducted for incorrect answers.

---

Use the information provided to choose the **BEST** answer from the four possible options.

On your **ANSWER SHEET** fill in the box that matches your answer.

---

You may use a calculator and a ruler.

1. The table gives information about rocks gathered on a beach.

Shape	Length (cm)	Colour
flat disc-like	6½	silver grey and black patches
egg-like	5	pinkish white with black glassy spots
rounded disc-like	4	glassy white
egg-like	3	white with black spots

Which two shapes describe the four rocks?

- (A) round, spotty
- (B) white, black
- (C) disc, egg
- (D) dull, glassy

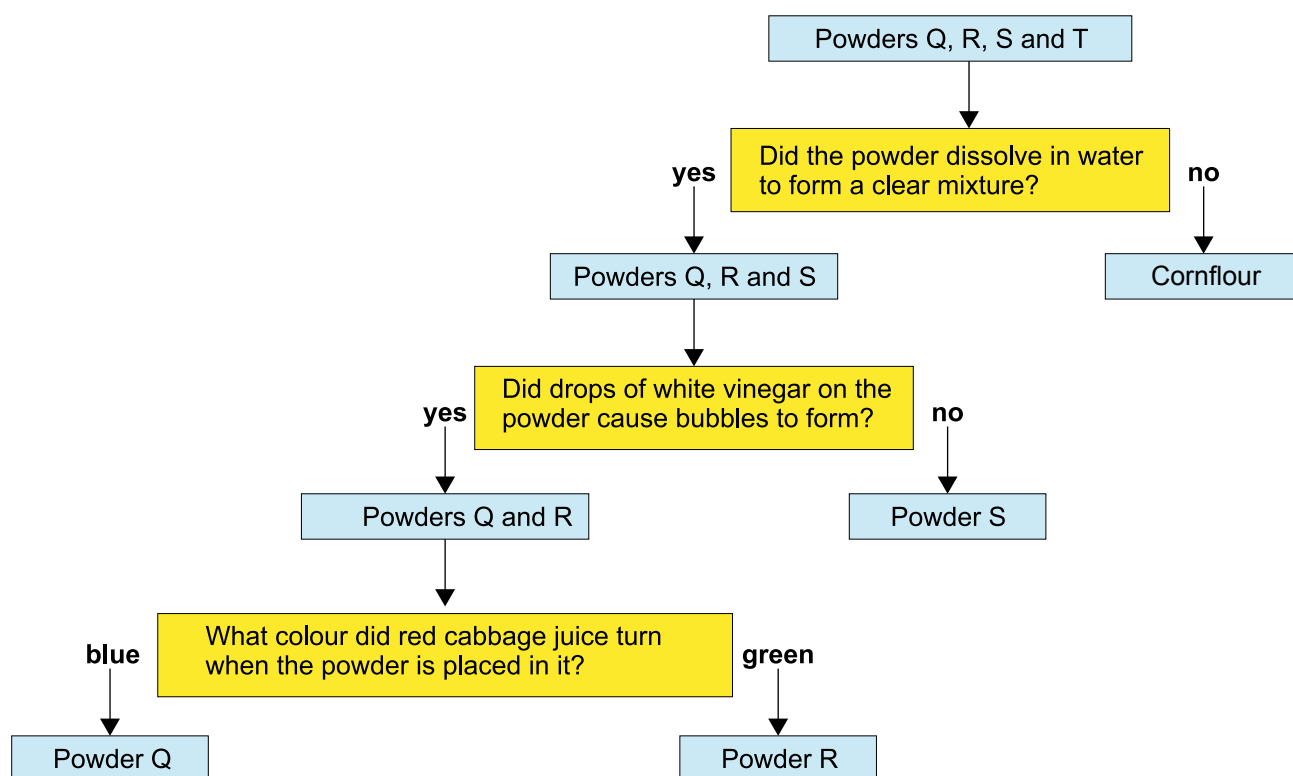
For questions 2 and 3 use the information below.

Some students tested four white powders.

The table gives their results.

Powder	Test			
	Do the powder and water form a clear mixture?	What colour does red cabbage juice turn when the powder is placed in it?	Do drops of white vinegar on the powder cause bubbles to form?	Do drops of yellow iodine turn black when placed on the powder?
corn flour	no	blue	no	yes
baking soda	yes	blue	yes	no
washing soda	yes	green	yes	no
epsom salt	yes	blue	no	no

The students constructed a flow chart to show how they distinguished between the four powders using some of the tests in the table.



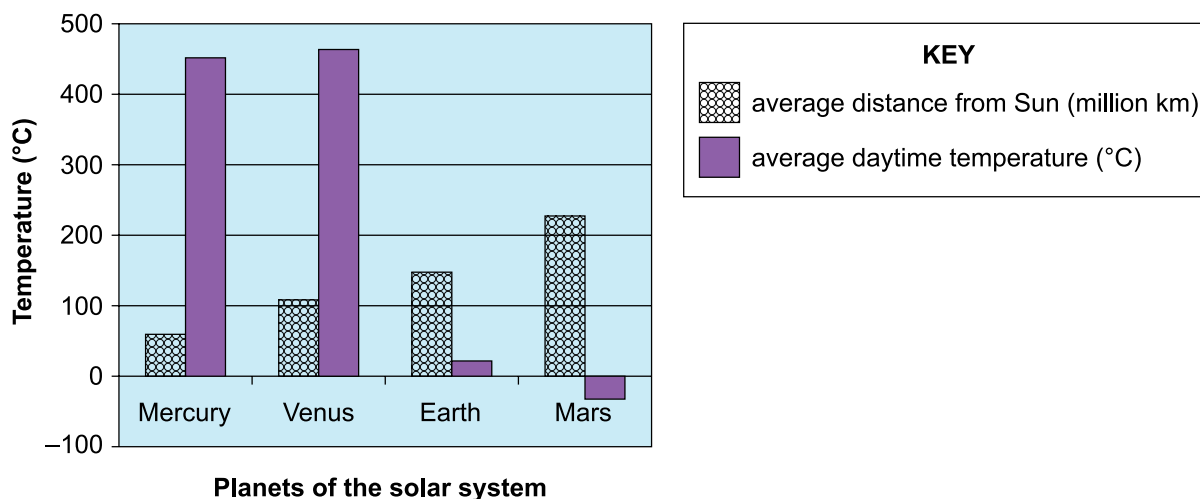
2. Which substance is powder S?

- (A) cornflour
- (B) baking soda
- (C) washing soda
- (D) epsom salt

3. The students did not use the test for identifying powders containing starch to make their flow chart. Which powder contained starch?

- (A) Q
- (B) R
- (C) S
- (D) T

4. The graph shows the average distance from the Sun and the average daytime temperature for some planets in the solar system.

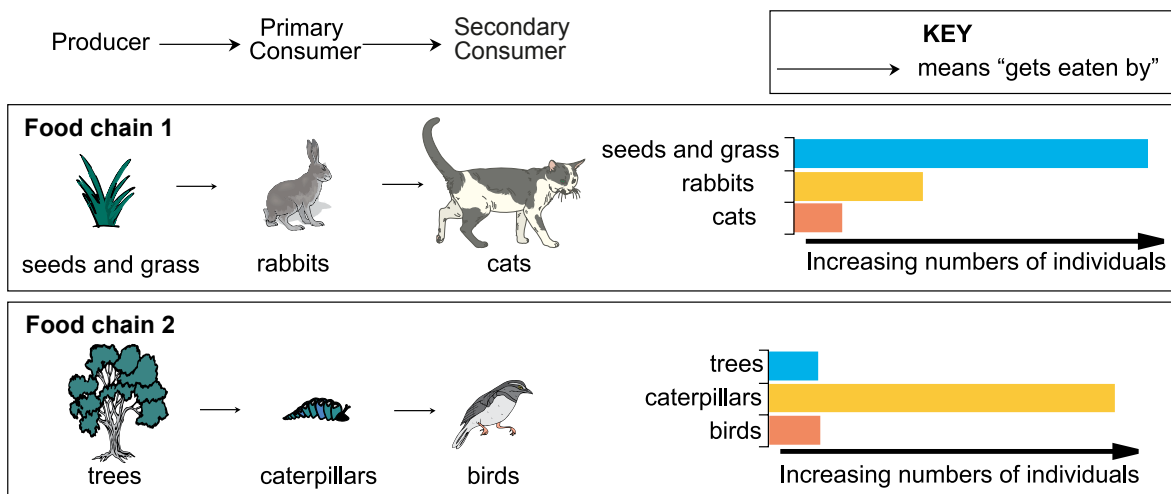


Generally, the further a planet is from the Sun, the colder its average daytime temperature will be.

According to the graph, which planet does not follow this trend?

- (A) Mercury
- (B) Venus
- (C) Earth
- (D) Mars

5. The diagrams below show the relationship between the numbers of producers and consumers in two food chains.



Which of the following statements is supported by the information above?

In a food chain

- (A) there are more primary consumers than there are secondary consumers.
- (B) there are more primary consumers than there are producers.
- (C) primary consumers are larger than secondary consumers.
- (D) primary consumers are usually insects that eat plants.

**END OF PAPER**

# ACKNOWLEDGMENT

Copyright in this booklet is owned by UNSW Global Pty Limited, unless otherwise indicated. Every effort has been made to trace and acknowledge copyright. UNSW Global Pty Limited apologises for any accidental infringement and welcomes information to redress the situation.



© 2017 UNSW Global Pty Limited. Copyright in this document is owned by UNSW Global Pty Limited.

IF THIS COVER APPEARS IN BLACK AND GREY ONLY, THIS PAPER IS AN ILLEGAL COPY.



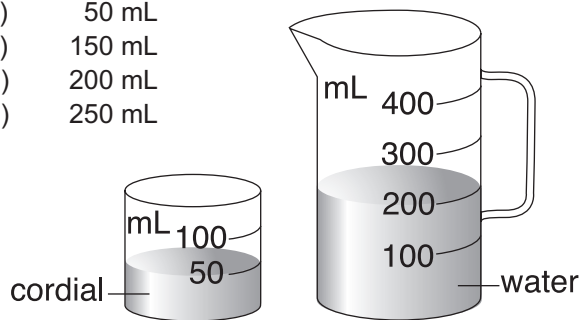
UNSW Global  
AUSTRALIA

## TO ANSWER THE QUESTIONS

### Example:

Ari added cordial to water to make a jug of drink. What will be the volume of the drink in the jug?

- (A) 50 mL
- (B) 150 mL
- (C) 200 mL
- (D) 250 mL



The answer is 250ml, so you would fill in the box **C** as shown.

**A** **B** **C** **D**



USE A PENCIL

DO NOT USE A COLOURED PENCIL OR PEN

## START

- |   |          |          |          |          |
|---|----------|----------|----------|----------|
| 1 | <b>A</b> | <b>B</b> | <b>C</b> | <b>D</b> |
| 2 | <b>A</b> | <b>B</b> | <b>C</b> | <b>D</b> |
| 3 | <b>A</b> | <b>B</b> | <b>C</b> | <b>D</b> |
| 4 | <b>A</b> | <b>B</b> | <b>C</b> | <b>D</b> |
| 5 | <b>A</b> | <b>B</b> | <b>C</b> | <b>D</b> |

SAMPLE



S

PAPER  
D

HarperCollins and its suppliers ensure protection of your privacy by maintaining compliance with appropriate data protection legislation. Visit <http://corporate.harpercollins.co.uk/privacy-policy> for more details.



UNSW Global  
AUSTRALIA