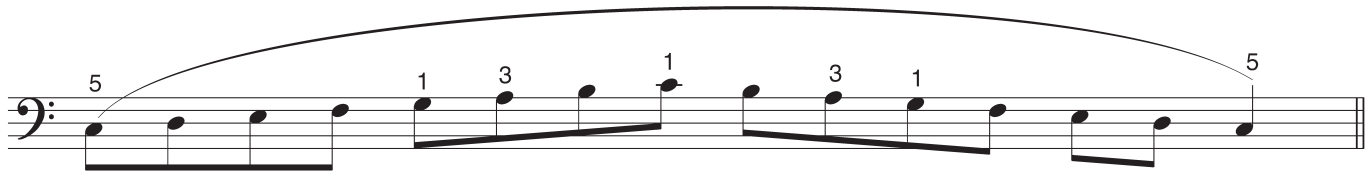


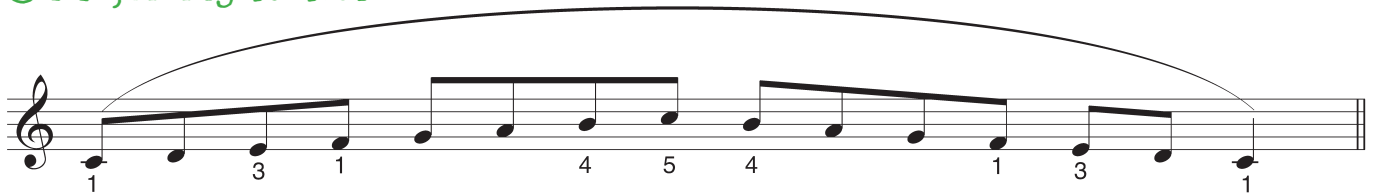
Get Set! Piano Tutor and Pieces Books 2: scales, arpeggios and broken chords

Scales - one octave separately

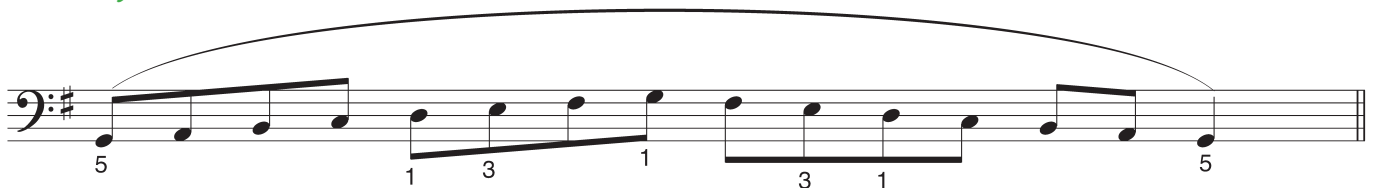
C major left hand



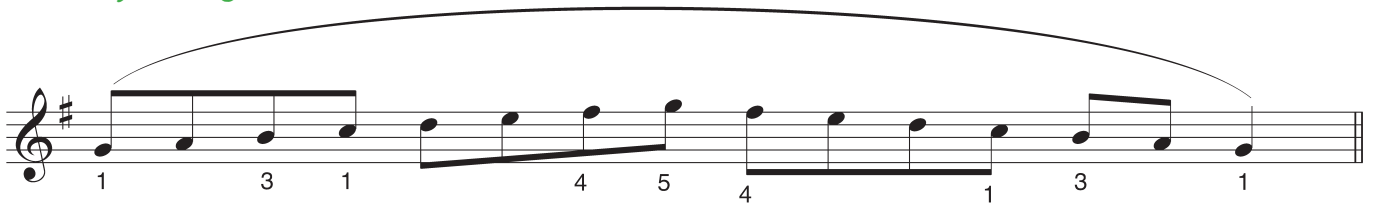
C major right hand



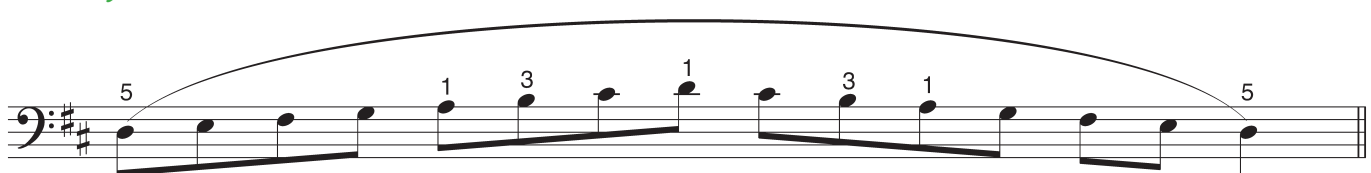
G major left hand



G major right hand



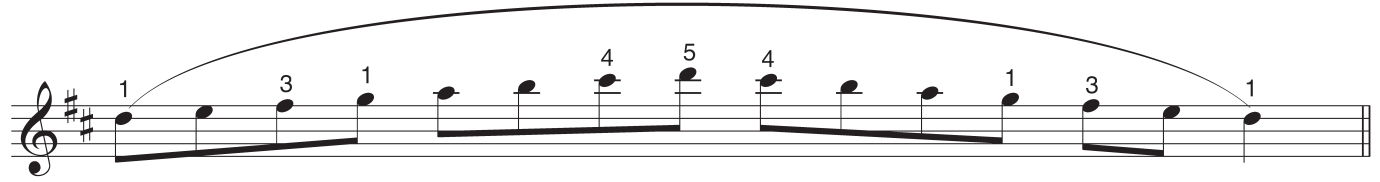
D major left hand



Scales, arpeggios and broken chords

Scales - one octave separately (cont.)

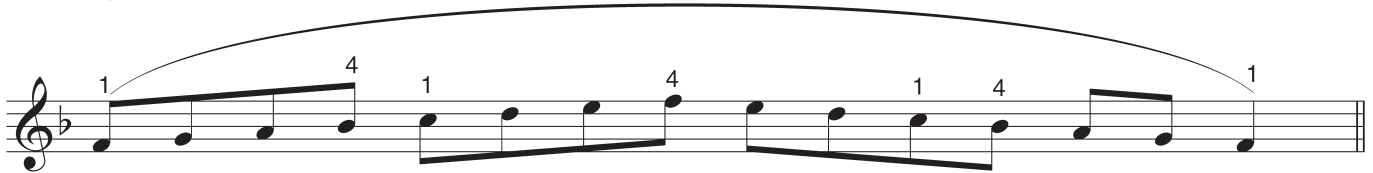
D major right hand



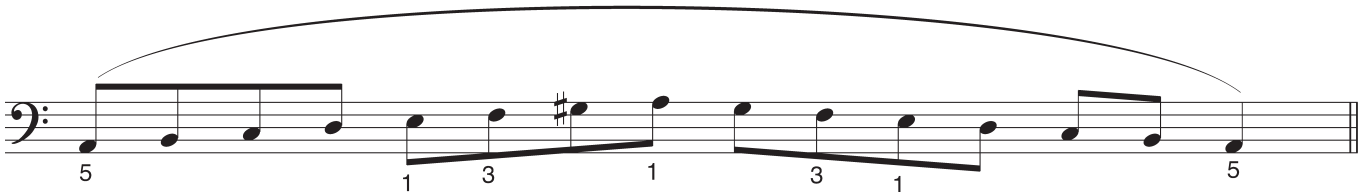
F major left hand



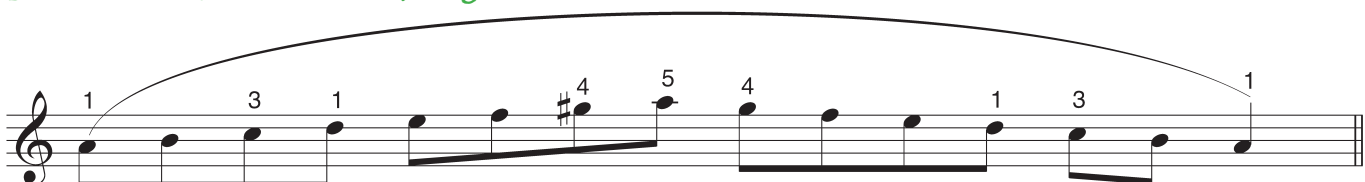
F major right hand



A minor (harmonic) left hand



A minor (harmonic) right hand



Scales, arpeggios and broken chords

Scales - one octave separately (cont.)

E minor (harmonic) left hand

Musical notation for the E minor (harmonic) left hand scale. The scale is written in bass clef with a key signature of one sharp (F#). The notes are: E2, F2, G2, A2, B2, C3, D3, E3, D3, C3, B2, A2, G2, F2, E2. Fingerings are indicated below the notes: 5, 1, 3, 1, 3, 1, 5.

E minor (harmonic) right hand

Musical notation for the E minor (harmonic) right hand scale. The scale is written in treble clef with a key signature of one sharp (F#). The notes are: E4, F4, G4, A4, B4, C5, D5, E5, D5, C5, B4, A4, G4, F4, E4. Fingerings are indicated below the notes: 1, 3, 1, 4, 5, 4, 1, 3, 1.

D minor (harmonic) left hand

Musical notation for the D minor (harmonic) left hand scale. The scale is written in bass clef with a key signature of two flats (Bb, Fb). The notes are: D2, Eb2, Fb2, Gb2, Ab2, Bb2, C3, D3, C3, Bb2, Ab2, Gb2, Fb2, Eb2, D2. Fingerings are indicated above the notes: 5, 1, 3, 1, 3, 1, 5.

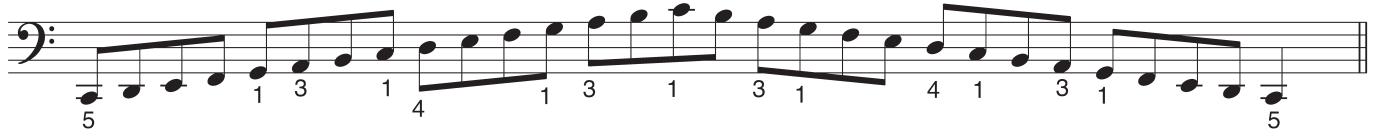
D minor (harmonic) right hand

Musical notation for the D minor (harmonic) right hand scale. The scale is written in treble clef with a key signature of two flats (Bb, Fb). The notes are: D4, Eb4, Fb4, Gb4, Ab4, Bb4, C5, D5, C5, Bb4, Ab4, Gb4, Fb4, Eb4, D4. Fingerings are indicated below the notes: 1, 3, 1, 4, 5, 4, 1, 3, 1.

Scales, arpeggios and broken chords

Scales - two octaves separately

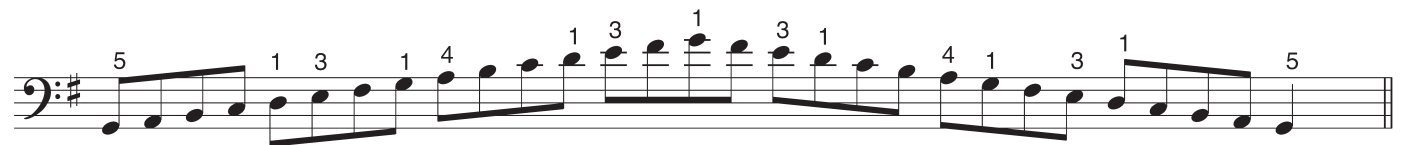
C major left hand



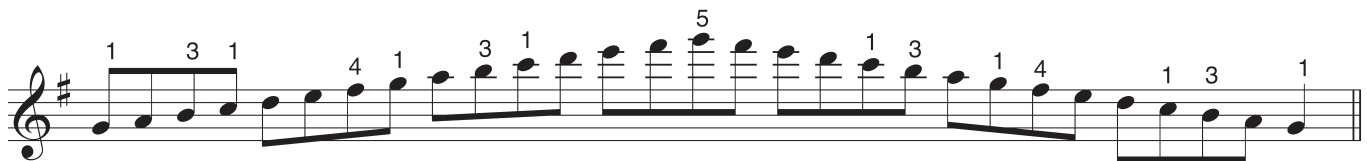
C major right hand



G major left hand



G major right hand



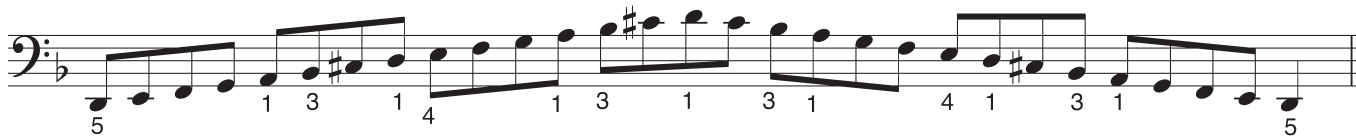
D major left hand



Scales, arpeggios and broken chords

Scales - two octaves separately (cont.)

D minor (harmonic) left hand



D minor (harmonic) right hand



E minor (harmonic) left hand



E minor (harmonic) right hand



Scales, arpeggios and broken chords

Scales - one octave together

C major

Musical notation for the C major scale, one octave together. The piece is in C major (one sharp) and common time. The right hand (treble clef) starts on middle C (C4) and ascends to C5, while the left hand (bass clef) descends from C4 to C3. The scale is played in a single breath, indicated by a slur over both staves. Fingerings are: RH (1, 3, 1, 4, 5, 4, 1, 3, 1) and LH (5, 1, 3, 1, 3, 1, 3, 1, 5).

G major

Musical notation for the G major scale, one octave together. The piece is in G major (two sharps) and common time. The right hand (treble clef) starts on G4 and ascends to G5, while the left hand (bass clef) descends from G4 to G3. The scale is played in a single breath, indicated by a slur over both staves. Fingerings are: RH (1, 3, 1, 4, 5, 4, 1, 3, 1) and LH (5, 1, 3, 1, 3, 1, 3, 1, 5).

D major

Musical notation for the D major scale, one octave together. The piece is in D major (two sharps) and common time. The right hand (treble clef) starts on D4 and ascends to D5, while the left hand (bass clef) descends from D4 to D3. The scale is played in a single breath, indicated by a slur over both staves. Fingerings are: RH (1, 3, 1, 4, 5, 4, 1, 3, 1) and LH (5, 1, 3, 1, 3, 1, 3, 1, 5).

Scales, arpeggios and broken chords

Duets for right hand scales - one octave

C major

musical score for C major scale duet. The pupil part is in treble clef, 4/4 time, with fingerings: 1 2 3 1 2 3 4 5 4 3 2 1 3 2 1. The teacher part is in bass clef, 4/4 time, with chords: C4-E4-G4, C4-E4-G4, C4-E4-G4, C4-E4-G4, C4-E4-G4, C4-E4-G4, C4-E4-G4, C4-E4-G4.

G major

musical score for G major scale duet. The pupil part is in treble clef, 4/4 time, with fingerings: 1 2 3 1 2 3 4 5 4 3 2 1 3 2 1. The teacher part is in bass clef, 4/4 time, with chords: G2-B2-D3, G2-B2-D3, G2-B2-D3, G2-B2-D3, G2-B2-D3, G2-B2-D3, G2-B2-D3, G2-B2-D3.

D major

musical score for D major scale duet. The pupil part is in treble clef, 4/4 time, with fingerings: 1 2 3 1 2 3 4 5 4 3 2 1 3 2 1. The teacher part is in bass clef, 4/4 time, with chords: D2-F#2-A2, D2-F#2-A2, D2-F#2-A2, D2-F#2-A2, D2-F#2-A2, D2-F#2-A2, D2-F#2-A2, D2-F#2-A2.

F major

musical score for F major scale duet. The pupil part is in treble clef, 4/4 time, with fingerings: 1 2 3 4 1 2 3 4 3 2 1 4 3 2 1. The teacher part is in bass clef, 4/4 time, with chords: F2-A2-C3, F2-A2-C3, F2-A2-C3, F2-A2-C3, F2-A2-C3, F2-A2-C3, F2-A2-C3, F2-A2-C3.

Scales, arpeggios and broken chords

Duets for right hand scales - one octave (cont.)

A minor (harmonic)

pupil

teacher

E minor (harmonic)

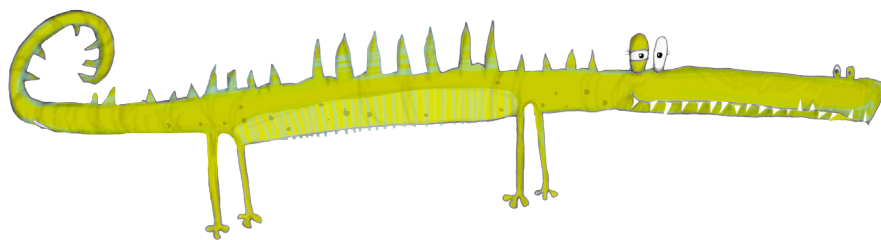
pupil

teacher

D minor

pupil

teacher



Scales, arpeggios and broken chords

Duets for right hand scales - two octaves

C major

Musical score for C major. The piece is in 4/4 time. The pupil part (treble clef) consists of two octaves of a C major scale: C4-D4-E4-F4-G4-A4-B4-C5, followed by a descending scale: B4-A4-G4-F4-E4-D4-C4. The teacher part (bass clef) consists of two octaves of a C major scale: C3-D3-E3-F3-G3-A3-B3-C4, followed by a descending scale: B3-A3-G3-F3-E3-D3-C3. The teacher part includes rests in the first two measures of the pupil's scale.

G major

Musical score for G major. The piece is in 4/4 time. The pupil part (treble clef) consists of two octaves of a G major scale: G4-A4-B4-C5-D5-E5-F#5-G6, followed by a descending scale: F#5-E5-D5-C5-B4-A4-G4. The teacher part (bass clef) consists of two octaves of a G major scale: G2-A2-B2-C3-D3-E3-F#3-G4, followed by a descending scale: F#3-E3-D3-C3-B2-A2-G2. The teacher part includes rests in the first two measures of the pupil's scale.

D major

Musical score for D major. The piece is in 4/4 time. The pupil part (treble clef) consists of two octaves of a D major scale: D4-E4-F#4-G4-A4-B4-C5, followed by a descending scale: B4-A4-G4-F#4-E4-D4. The teacher part (bass clef) consists of two octaves of a D major scale: D2-E2-F#2-G2-A2-B2-C3, followed by a descending scale: B2-A2-G2-F#2-E2-D2. The teacher part includes rests in the first two measures of the pupil's scale.

F major

Musical score for F major. The piece is in 4/4 time. The pupil part (treble clef) consists of two octaves of an F major scale: F4-G4-A4-Bb4-C5, followed by a descending scale: Bb4-A4-G4-F4. The teacher part (bass clef) consists of two octaves of an F major scale: F2-G2-A2-Bb2-C3, followed by a descending scale: Bb2-A2-G2-F2. The teacher part includes rests in the first two measures of the pupil's scale.

Scales, arpeggios and broken chords

Duets for right hand scales - two octaves (cont.)

A minor (harmonic)

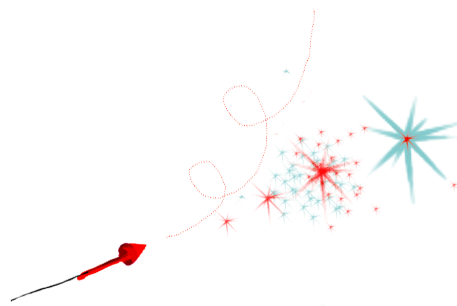
Musical score for A minor (harmonic) duet. The pupil part (treble clef) consists of two octaves of the A minor scale: A2-B2-C3-D3-E3-F#3-G3-A3, followed by a descending scale: G3-F#3-E3-D3-C3-B2-A2. The teacher part (bass clef) provides harmonic accompaniment with a steady eighth-note pattern: A2-G2-A2-B2-A2-G2-A2-B2-A2, with a key signature change to A minor (F#) in the second measure.

E minor (harmonic)

Musical score for E minor (harmonic) duet. The pupil part (treble clef) consists of two octaves of the E minor scale: E2-F#2-G2-A2-B2-C#2-D2-E2, followed by a descending scale: D2-C#2-B2-A2-G2-F#2-E2. The teacher part (bass clef) provides harmonic accompaniment with a steady eighth-note pattern: E2-D2-E2-F#2-E2-D2-E2-F#2-E2, with a key signature change to E minor (F#) in the second measure.

D minor (harmonic)

Musical score for D minor (harmonic) duet. The pupil part (treble clef) consists of two octaves of the D minor scale: D2-E2-F2-G2-A2-B2-C2-D2, followed by a descending scale: C2-B2-A2-G2-F2-E2-D2. The teacher part (bass clef) provides harmonic accompaniment with a steady eighth-note pattern: D2-C2-D2-E2-D2-C2-D2-E2-D2, with a key signature change to D minor (F) in the second measure.



Scales, arpeggios and broken chords

Duets for left hand scales - one octave

C major

teacher

pupil

5 4 3 2 1 3 2 1 2 3 1 2 3 4 5

Detailed description: This musical score is for the C major scale. The teacher's part is in the right hand, starting with a C major triad (C-E-G) and followed by a descending scale: G-F-E-D-C-B-A-G. The pupil's part is in the left hand, starting with a C major triad (C-E-G) and followed by an ascending scale: C-D-E-F-G-A-B-A-G-F-E-D-C. Fingering numbers are provided below the notes: 5, 4, 3, 2, 1, 3, 2, 1, 2, 3, 1, 2, 3, 4, 5.

G major

teacher

pupil

5 4 3 2 1 3 2 1 2 3 1 2 3 4 5

Detailed description: This musical score is for the G major scale. The teacher's part is in the right hand, starting with a G major triad (G-B-D) and followed by a descending scale: D-C-B-A-G-F-E-D. The pupil's part is in the left hand, starting with a G major triad (G-B-D) and followed by an ascending scale: G-A-B-A-G-F-E-D-C-B-A-G. Fingering numbers are provided below the notes: 5, 4, 3, 2, 1, 3, 2, 1, 2, 3, 1, 2, 3, 4, 5.

D major

teacher

pupil

5 4 3 2 1 3 2 1 2 3 1 2 3 4 5

Detailed description: This musical score is for the D major scale. The teacher's part is in the right hand, starting with a D major triad (D-F#-A) and followed by a descending scale: A-G-F#-E-D-C-B-A. The pupil's part is in the left hand, starting with a D major triad (D-F#-A) and followed by an ascending scale: D-E-F#-G-A-B-A-G-F#-E-D-C-B-A. Fingering numbers are provided below the notes: 5, 4, 3, 2, 1, 3, 2, 1, 2, 3, 1, 2, 3, 4, 5.

F major

teacher

pupil

5 4 3 2 1 3 2 1 2 3 1 2 3 4 5

Detailed description: This musical score is for the F major scale. The teacher's part is in the right hand, starting with an F major triad (F-A-C) and followed by a descending scale: C-B-A-G-F-E-D-C. The pupil's part is in the left hand, starting with an F major triad (F-A-C) and followed by an ascending scale: F-G-A-G-F-E-D-C-B-A-G. Fingering numbers are provided below the notes: 5, 4, 3, 2, 1, 3, 2, 1, 2, 3, 1, 2, 3, 4, 5.

Scales, arpeggios and broken chords

Duets for left hand scales – one octave (cont.)

A minor (harmonic)

teacher

pupil

5 4 3 2 1 3 2 1 2 3 1 2 3 4 5

Detailed description: This musical score is for the A minor harmonic scale. The teacher's part is in the treble clef, 4/4 time, and consists of two measures of chords: A minor, G major, F# major, and E minor. The pupil's part is in the bass clef, 4/4 time, and consists of two measures of a scale: an ascending scale from G4 to G5 and a descending scale from G5 to G4. Fingering numbers are provided below the notes.

E minor (harmonic)

teacher

pupil

5 4 3 2 1 3 2 1 2 3 1 2 3 4 5

Detailed description: This musical score is for the E minor harmonic scale. The teacher's part is in the treble clef, 4/4 time, and consists of two measures of chords: E minor, D major, C# major, and B minor. The pupil's part is in the bass clef, 4/4 time, and consists of two measures of a scale: an ascending scale from D4 to D5 and a descending scale from D5 to D4. Fingering numbers are provided below the notes.

D minor (harmonic)

teacher

pupil

5 4 3 2 1 3 2 1 2 3 1 2 3 4 5

Detailed description: This musical score is for the D minor harmonic scale. The teacher's part is in the treble clef, 4/4 time, and consists of two measures of chords: D minor, C major, B major, and A minor. The pupil's part is in the bass clef, 4/4 time, and consists of two measures of a scale: an ascending scale from C4 to C5 and a descending scale from C5 to C4. Fingering numbers are provided below the notes.



Scales, arpeggios and broken chords

Duets for left hand scales - two octaves

C major

teacher

pupil

Musical score for C major. The teacher part is in the treble clef, and the pupil part is in the bass clef. Both are in 4/4 time. The teacher part consists of four measures of broken chords and eighth-note patterns. The pupil part consists of two octaves of a scale in the bass clef, starting on C2 and ending on C4.

G major

teacher

pupil

Musical score for G major. The teacher part is in the treble clef, and the pupil part is in the bass clef. Both are in 4/4 time. The teacher part consists of four measures of broken chords and eighth-note patterns. The pupil part consists of two octaves of a scale in the bass clef, starting on G2 and ending on G4.

D major

teacher

pupil

Musical score for D major. The teacher part is in the treble clef, and the pupil part is in the bass clef. Both are in 4/4 time. The teacher part consists of four measures of broken chords and eighth-note patterns. The pupil part consists of two octaves of a scale in the bass clef, starting on D2 and ending on D4.

F major

teacher

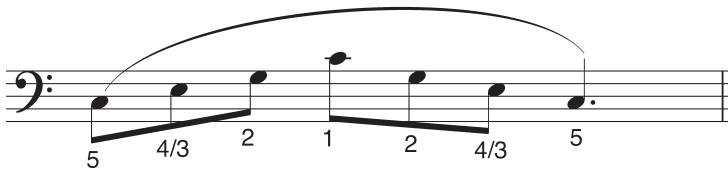
pupil

Musical score for F major. The teacher part is in the treble clef, and the pupil part is in the bass clef. Both are in 4/4 time. The teacher part consists of four measures of broken chords and eighth-note patterns. The pupil part consists of two octaves of a scale in the bass clef, starting on F2 and ending on F4.

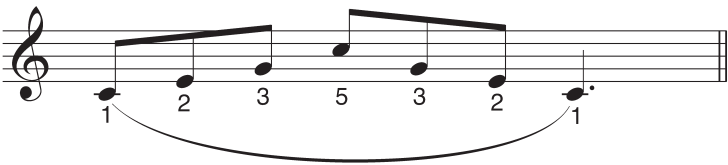
Scales, arpeggios and broken chords

Arpeggios - separately

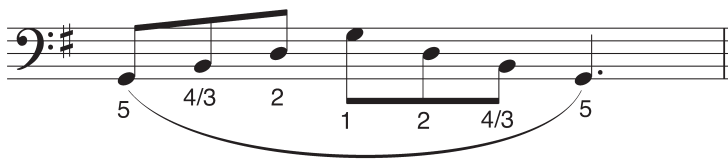
C major left hand



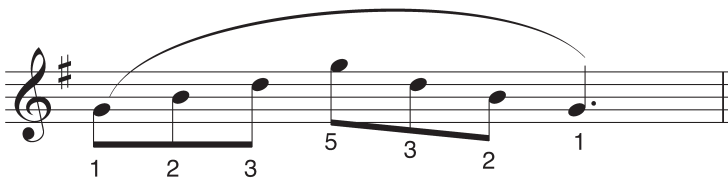
C major right hand



G major left hand



G major right hand



F major left hand



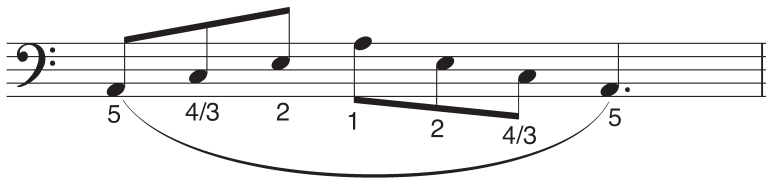
F major right hand



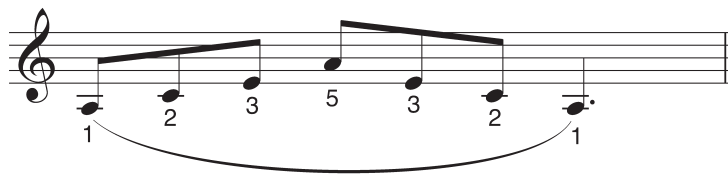
Scales, arpeggios and broken chords

Arpeggios - separately (cont.)

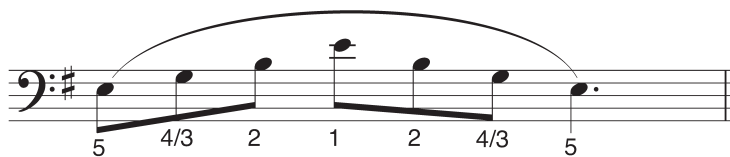
A minor left hand



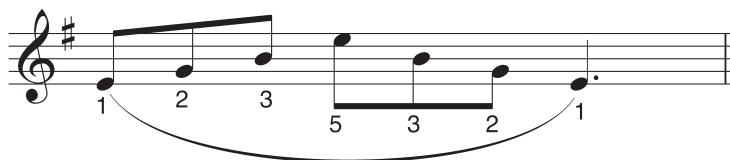
A minor right hand



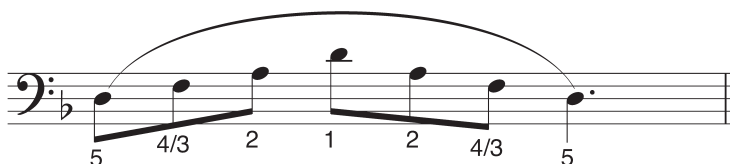
E minor left hand



E minor right hand



D minor left hand



D minor right hand



Scales, arpeggios and broken chords

Broken chords – separately

C major left hand

Musical notation for the C major left hand scale in bass clef. The scale is written in two phrases: an ascending phrase and a descending phrase. Fingerings are indicated by numbers 1-5 below the notes. The ascending phrase starts on C4 (F1) and ends on C5 (F2), with fingerings 5, 3, 1, 5, 3, 1, 5, 2, 1, 2. The descending phrase starts on C5 (F2) and ends on C4 (F1), with fingerings 1, 2, 5, 1, 3, 5, 1, 3, 5, 1.

C major right hand

Musical notation for the C major right hand scale in treble clef. The scale is written in two phrases: an ascending phrase and a descending phrase. Fingerings are indicated by numbers 1-5 below the notes. The ascending phrase starts on C4 (F1) and ends on C5 (F2), with fingerings 1, 3, 5, 1, 2, 5, 1, 3, 5, 3. The descending phrase starts on C5 (F2) and ends on C4 (F1), with fingerings 5, 3, 1, 5, 2, 1, 5, 3, 1, 5.

G major left hand

Musical notation for the G major left hand scale in bass clef. The scale is written in two phrases: an ascending phrase and a descending phrase. Fingerings are indicated by numbers 1-5 below the notes. The ascending phrase starts on G3 (F1) and ends on G4 (F2), with fingerings 5, 3, 1, 5, 3, 1, 5, 2, 1, 2. The descending phrase starts on G4 (F2) and ends on G3 (F1), with fingerings 1, 2, 5, 1, 3, 5, 1, 3, 5, 1.

G major right hand

Musical notation for the G major right hand scale in treble clef. The scale is written in two phrases: an ascending phrase and a descending phrase. Fingerings are indicated by numbers 1-5 below the notes. The ascending phrase starts on G4 (F1) and ends on G5 (F2), with fingerings 1, 3, 5, 1, 2, 5, 1, 3, 5, 3. The descending phrase starts on G5 (F2) and ends on G4 (F1), with fingerings 5, 3, 1, 5, 2, 1, 5, 3, 1, 5.

F major left hand

Musical notation for the F major left hand scale in bass clef. The scale is written in two phrases: an ascending phrase and a descending phrase. Fingerings are indicated by numbers 1-5 below the notes. The ascending phrase starts on F3 (F1) and ends on F4 (F2), with fingerings 5, 3, 1, 5, 3, 1, 5, 2, 1, 2. The descending phrase starts on F4 (F2) and ends on F3 (F1), with fingerings 1, 2, 5, 1, 3, 5, 1, 3, 5, 1.

F major right hand

Musical notation for the F major right hand scale in treble clef. The scale is written in two phrases: an ascending phrase and a descending phrase. Fingerings are indicated by numbers 1-5 below the notes. The ascending phrase starts on F4 (F1) and ends on F5 (F2), with fingerings 1, 3, 5, 1, 2, 5, 1, 3, 5, 3. The descending phrase starts on F5 (F2) and ends on F4 (F1), with fingerings 5, 3, 1, 5, 2, 1, 5, 3, 1, 5.

Scales, arpeggios and broken chords

Broken chords – separately (cont.)

A minor left hand

Musical notation for the A minor left hand scale. The scale is written in bass clef and consists of two phrases. The first phrase is an ascending scale: A2, B2, C3, D3, E3, F3, G3, A3. The second phrase is a descending scale: G3, F3, E3, D3, C3, B2, A2. Fingering numbers are written below the notes: 5 3 1 5 3 1 5 2 1 2 for the first phrase, and 1 2 5 1 3 5 1 3 5 1 for the second phrase.

A minor right hand

Musical notation for the A minor right hand scale. The scale is written in treble clef and consists of two phrases. The first phrase is an ascending scale: A3, B3, C4, D4, E4, F4, G4, A4. The second phrase is a descending scale: G4, F4, E4, D4, C4, B3, A3. Fingering numbers are written above the notes: 1 3 5 1 2 5 1 3 5 3 for the first phrase, and 5 3 1 5 2 1 5 3 1 5 for the second phrase.

E minor left hand

Musical notation for the E minor left hand scale. The scale is written in bass clef with a key signature of one sharp (F#). The scale consists of two phrases. The first phrase is an ascending scale: E2, F#2, G3, A3, B3, C4, D4, E4. The second phrase is a descending scale: D4, C4, B3, A3, G3, F#2, E2. Fingering numbers are written below the notes: 5 3 1 5 3 1 5 2 1 2 for the first phrase, and 1 2 5 1 3 5 1 3 5 1 for the second phrase.

E minor right hand

Musical notation for the E minor right hand scale. The scale is written in treble clef with a key signature of one sharp (F#). The scale consists of two phrases. The first phrase is an ascending scale: E4, F#4, G5, A5, B5, C6, D6, E6. The second phrase is a descending scale: D6, C6, B5, A5, G5, F#4, E4. Fingering numbers are written below the notes: 1 3 5 1 2 5 1 3 5 3 for the first phrase, and 5 3 1 5 2 1 5 3 1 5 for the second phrase.

D minor left hand

Musical notation for the D minor left hand scale. The scale is written in bass clef with a key signature of two flats (Bb, Eb). The scale consists of two phrases. The first phrase is an ascending scale: D2, Eb2, F3, G3, Ab3, Bb3, C4, D4. The second phrase is a descending scale: C4, Bb3, Ab3, G3, F3, Eb2, D2. Fingering numbers are written below the notes: 5 3 1 5 3 1 5 2 1 2 for the first phrase, and 1 2 5 1 3 5 1 3 5 1 for the second phrase.

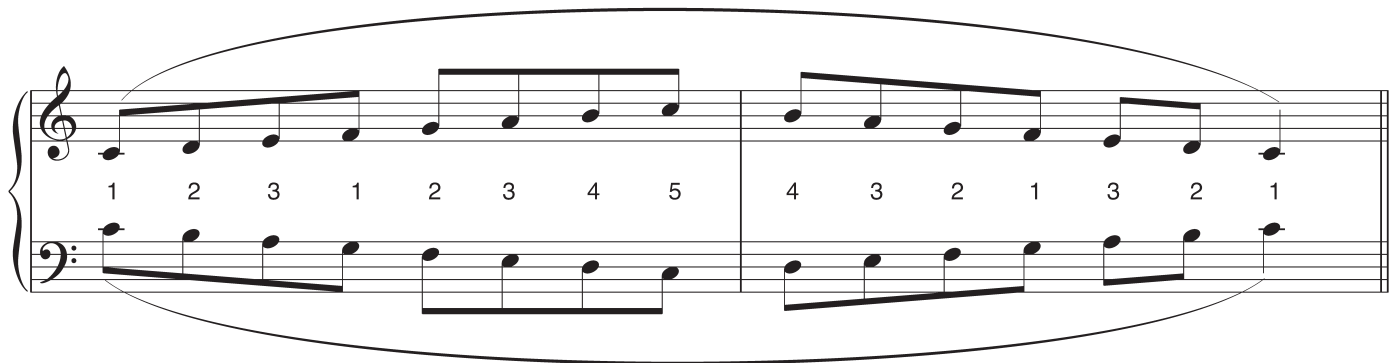
D minor right hand

Musical notation for the D minor right hand scale. The scale is written in treble clef with a key signature of two flats (Bb, Eb). The scale consists of two phrases. The first phrase is an ascending scale: D4, Eb4, F5, G5, Ab5, Bb5, C6, D6. The second phrase is a descending scale: C6, Bb5, Ab5, G5, F5, Eb4, D4. Fingering numbers are written below the notes: 1 3 5 1 2 5 1 3 5 3 for the first phrase, and 5 3 1 5 2 1 5 3 1 5 for the second phrase.

Scales, arpeggios and broken chords

Contrary motion scales – one octave

C major



Chromatic

