

## Enquiry 1

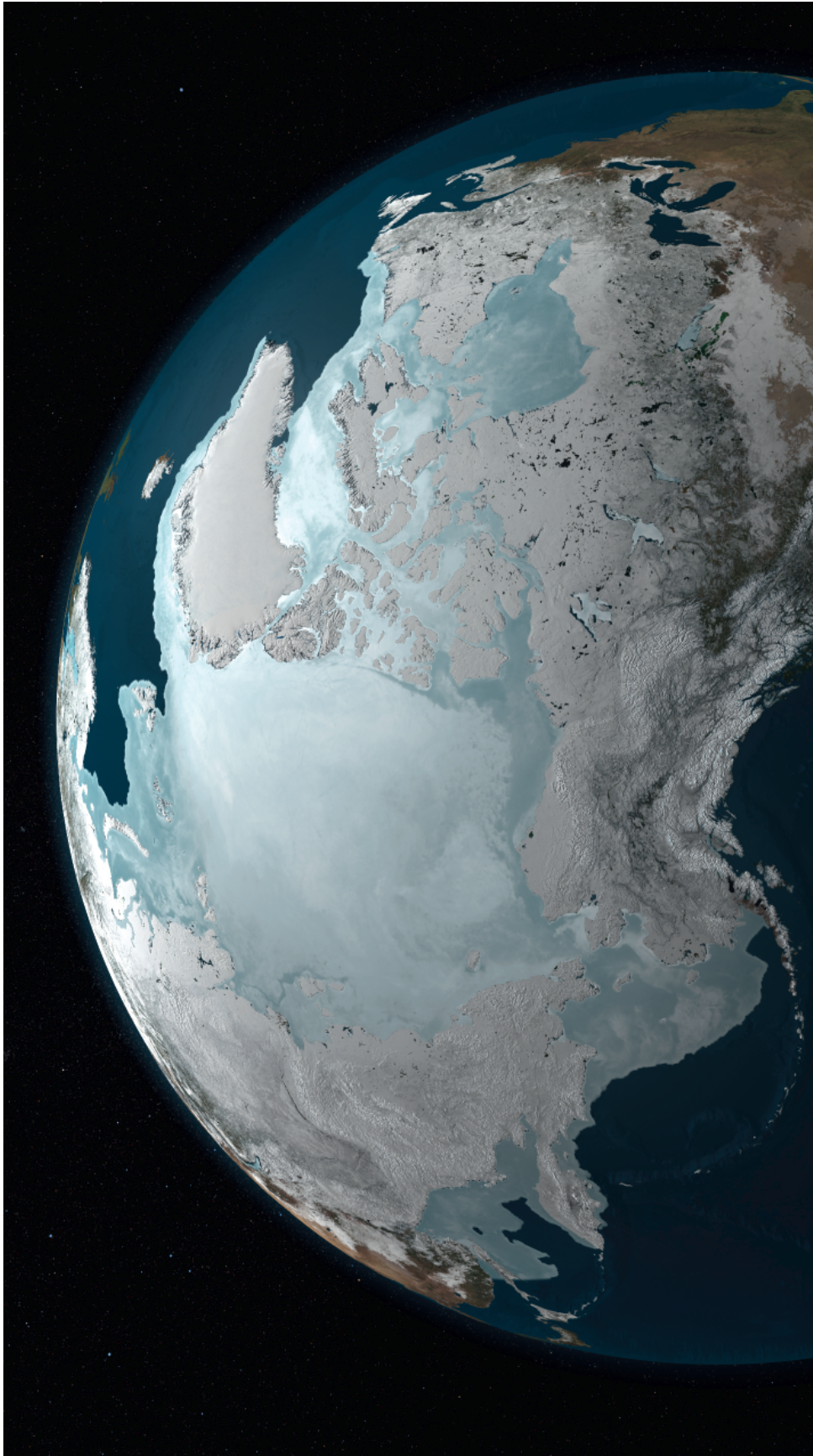
## Frozen landscapes

The following table lists all of the photographs in this image gallery. All images with a © symbol are subject to copyright and licence restrictions and may only be used for class teaching. See License agreement for more information. All of the other images listed hold a Creative Commons licence (e.g. CC by 3.0 or CC by-SA 3.0) and may be used outside the classroom provided the photographer credit information is retained. All images have their credit information noted at the bottom of each page.

Image number	Description
1.1	Arctic sea ice in 2010
1.2	Satellite image of Antarctica
1.3	Sea ice, Antarctica
1.4	The Himalayas
1.5	Emperor penguins, Antarctica
1.6	Striations
1.7	Ice sheet on Baffin Island, Canada
1.8	Mountain glacier, Canada
1.9	Small alpine glacier on Baffin Island, Canada
1.10	Hanging glaciers in Auyuittuq National Park, Canada
1.11	Matterhorn in Switzerland is a pyramidal peak
1.12	Nant Ffrancon Valley in Snowdonia is a U shaped valley
1.13	Derwentwater and Keswick in the Lake District
1.14	Langdale Pikes, Lake District
1.15	Lungerersee Lake in the Swiss Alps
1.16	Panorama Ridge, British Columbia, Canada

# 1.1

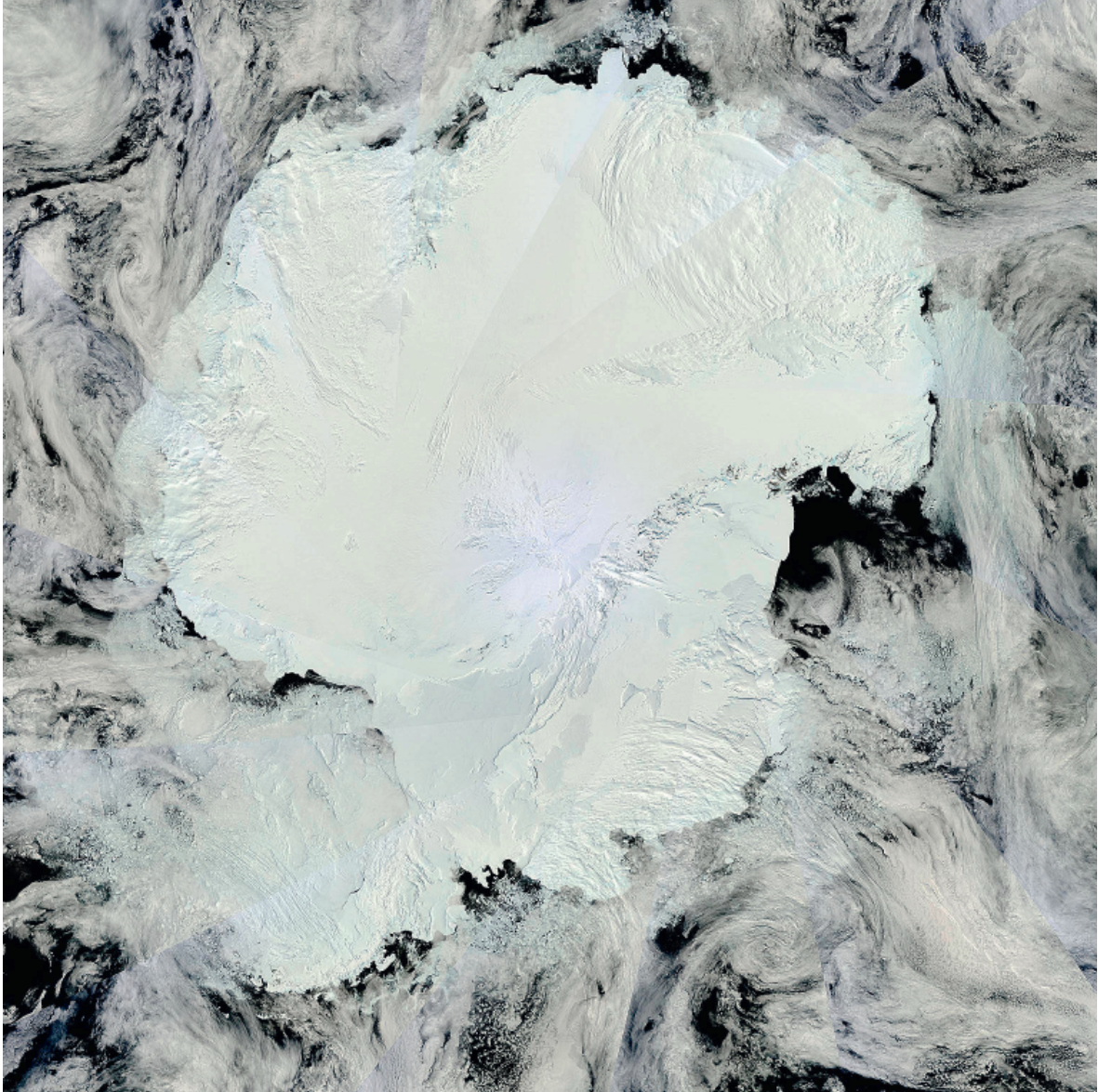
## Arctic sea ice in 2010





## 1.2

## Satellite image of Antarctica





## 1.3

## Sea ice, Antarctica





# 1.4

## The Himalayas





## 1.5

## Emperor penguins, Antarctica





# 1.6

# Striations





## 1.7

## Ice sheet on Baffin Island, Canada





# 1.8

## Mountain glacier, Canada



# 1.9

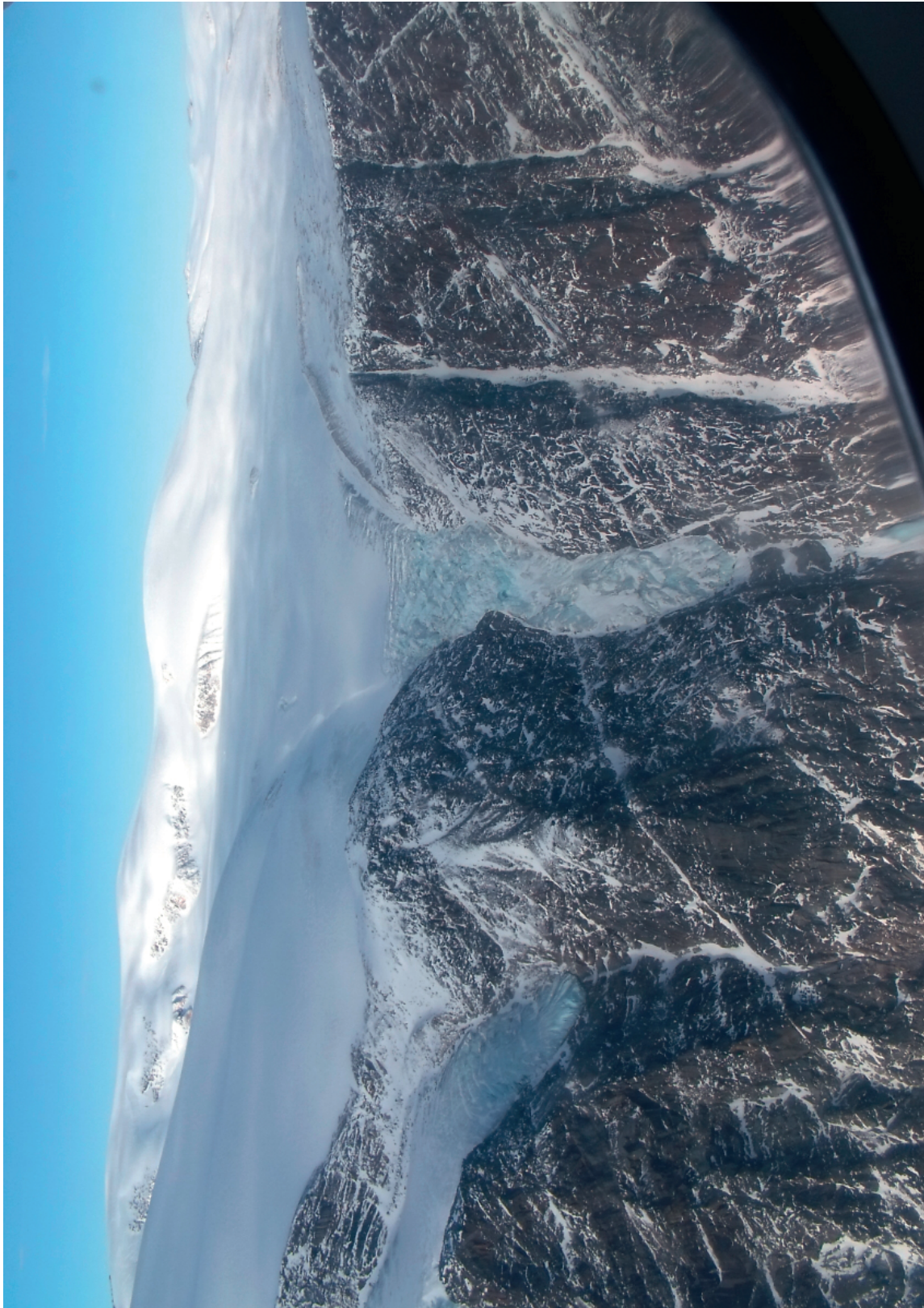
## Small alpine glacier on Baffin Island, Canada





# 1.10

## Hanging glaciers in Auyuittuq National Park, Canada





# 1.11

## Matterhorn in Switzerland is a pyramidal peak





# 1.12

## Nant Ffrancon Valley in Snowdonia is a U shaped valley





# 1.13

## Derwentwater and Keswick in the Lake District





# 1.14

## Langdale Pikes, Lake District





# 1.15

## Lungerersee Lake in the Swiss Alps





1.16

Panorama Ridge, British Columbia,  
Canada

