

# Noun phrases I

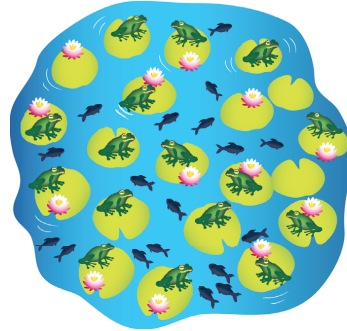
A **phrase** is a small group of words that makes up a meaningful unit in a sentence. A noun phrase does not usually have a verb and it does not make sense on its own.

## Examples:

The rubbish was put  
**in the bin.**



The fish were swimming **around  
the pond.**



Often a single noun could replace a phrase. Noun phrases are used to add more detail.

## Example:

The **lucky little girl** won a prize.



In the example above, this could simply have said, "The girl won a prize." The words "lucky little" add more detail.

Warm up



1 What word type is **not** usually found in a noun phrase? Choose from the words below.

verb

noun

adjective

adverb

## Test yourself



2 Find the noun phrase in each of these sentences.

- a) My friend's cat likes jumping.
- b) We ate dinner in the kitchen.
- c) I drank a cup of warm tea.
- d) Alex ran along the beach.
- e) Kara's pink bedroom was messy.
- f) He walked down the path.
- g) We can't go shopping in the heavy rain.



## Challenge yourself



3 Copy the sentences and choose a noun phrase below to complete each one.

of dirty plates

at the park

after lunch

deep and cold

upside down

small and quiet

- a) Bats hang ...
- b) The waiter was carrying a pile ...
- c) The mouse, ..., scuttled away.
- d) The sea is ...
- e) We played football ...
- f) Bo finished his homework ...

4 Read the noun phrase at the start of each sentence and write a suitable ending.

a) After a long time, ...

b) The pretty, white snowflakes ...



## How did you do?



# Determiners and articles

A **determiner** goes before a noun or noun phrase. The most common determiners are **the**, **a** and **an**. They are also known as **articles**.

The **definite article** is **the**. It is normally used when we are talking about a particular thing.

## Examples:

**the** piano

**the** egg

**the** new school

The **indefinite article** is **a** or **an**. These are normally used when we are talking about a thing in general.

## Examples:

**a** piano

**an** egg

**a** new school

We use **a** before a word beginning with a consonant and **an** before a word beginning with a vowel. Words beginning with a silent **h** are exceptions. We use **an** before them because they have a vowel sound.

## Examples:

**a** hospital (*h is not silent*)

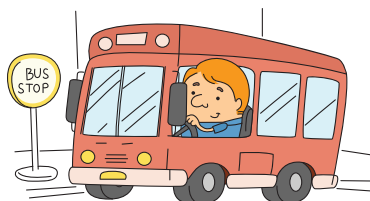
**an** hour (*h is silent*)

## Warm up



1 Identify the **determiners** in each sentence below.

- The people, who were waiting at the bus stop, wanted the next bus to be red.
- An artist, who painted in the style of Van Gogh, once entered his work in an exhibition.
- A local choir beat a flautist, a clarinettist and a pianist to win first prize at the National Music Festival.

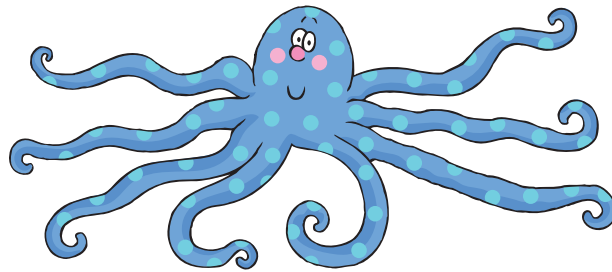


## Test yourself



2 Which sentence uses the correct **determiner**?

- a) We eat the cake every day.
- b) A octopus has eight legs.
- c) She travels into the London every day for work.
- d) He wanted to buy a new car.



## Challenge yourself



3 Choose **a**, **an** or **the** to fill in the gaps in the sentences below.

- a) Although \_\_\_\_\_ tide was coming in, we still managed to have some time playing on \_\_\_\_\_ beach.
- b) On Saturday \_\_\_\_\_ weather will be humid with \_\_\_\_\_ thunderstorm likely.
- c) Mum asked us to shut \_\_\_\_\_ windows because \_\_\_\_\_ rain was coming in.
- d) \_\_\_\_\_ African elephant has larger ears than \_\_\_\_\_ Asian elephant.
- e) Our class went on \_\_\_\_\_ visit to \_\_\_\_\_ science museum in London.
- f) My sister screamed when she saw \_\_\_\_\_ large, hairy spider crawl across her bedroom.



How did you do?



# Progress test 3

Rewrite the sentences below adding any full stops or capital letters in the correct place.

- 1 sophie won second prize in the skipping race at sports day she was very happy
- 2 i love gardening with my sister at the weekend we are trying to grow some vegetables of our own
- 3 What is another name for inverted commas?
  - a) commas
  - b) exclamation marks
  - c) inverted full stops
  - d) speech marks

- 4 Copy the sentence below and add inverted commas in the correct place.

Can you hear me? I asked.

Copy the conversations below and add the inverted commas and correct punctuation.

- 5 Can I go and play at Al's house I asked Dad
- 6 Yes but make sure you are home for 5pm Dad replied.

- 7 Copy the sentence below. Add any missing full stops or capital letters.

speedy went so fast on his skateboard he overtook a bicycle

Give an example of when you might be asked to write a letter that uses:

- 8 standard English
- 9 non-standard English
- 10 Rewrite this sentence using standard English.

I love watching football, it's well good.

# Progress test 3

11 Which sentence uses inverted commas correctly?

- a) "The teacher shouted please sit down!"
- b) The teacher shouted, "Please sit down!"
- c) The teacher shouted, Please "Sit down!"
- d) "The teacher shouted," please sit down.

12 Write a sentence that uses a question mark.

Turn the sentences below into a dialogue between the two characters. Remember to use inverted commas and speech punctuation correctly.

13 James is going to ask his mum if he can stay up late to watch TV.

14 James's mum is going to say no because it is a school night but he can stay up later at the weekend.

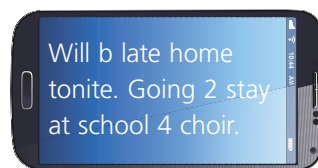
15 Write an exclamation.

Rewrite these text messages in standard English.

16



17



18 Rewrite this message in informal English.

Please can all children attend a dress rehearsal on Monday evening at 7.00 pm.

19 Write a statement.

20 Give one example of a type of text where you may find direct speech.

Score  / 20

43