

- 1 The diagram below shows a simple microscope.

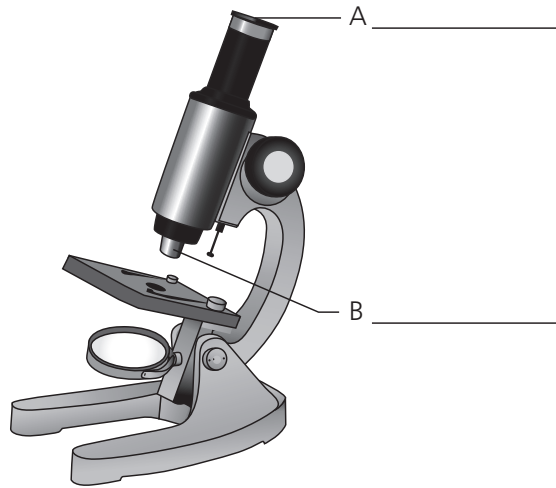


FIG 1.1

- a) On the diagram label the parts identified as A and B.  
 b) Explain how parts A and B contribute to the overall magnification of the lens.

---



---



---



---

[3 marks]

- 2 The line graph below represents the number of grassquits (small birds) seen living in nests on trees in the school yard for six months. Grassquits thrive in a cool environment. The grassquits eat the fruits from the trees which bear only in December and January.

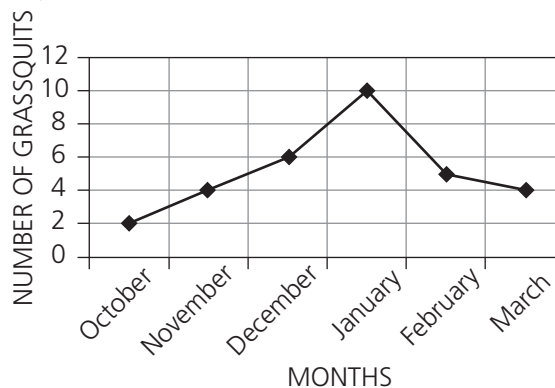


FIG 1.2



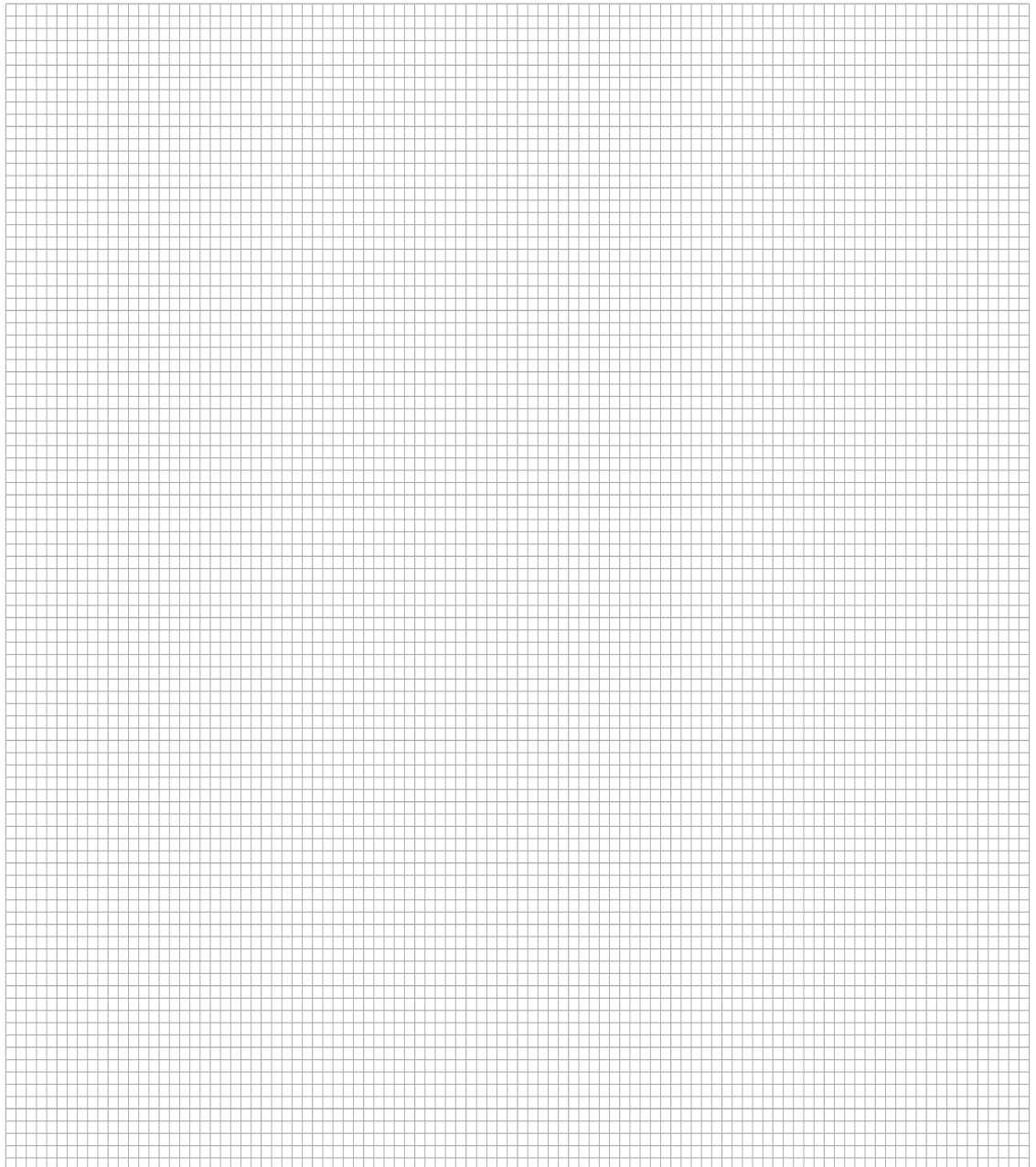


- b) Use the table constructed to make a bar graph. Use the grid provided below. Remember to label the axes.

[10 marks]

TITLE: \_\_\_\_\_

\_\_\_\_\_



- 4 The diagrams show five different organisms that were found on the school's compound.

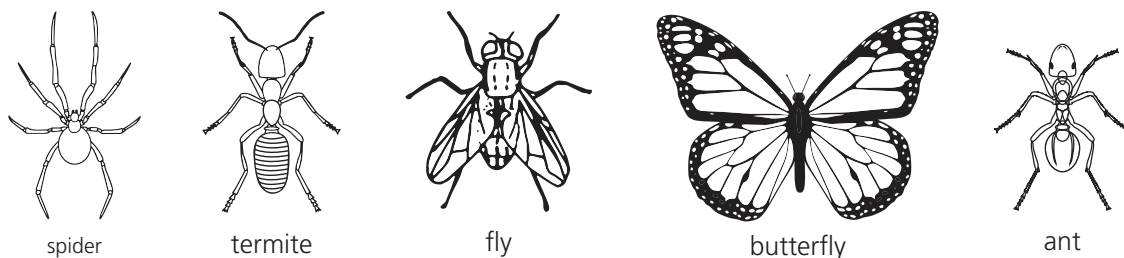


FIG 1.3

- a) State TWO observable features that could be used to classify them.

---

---

- b) Classify the organisms using the TWO features you stated above.

---

---

---

[4 marks]

- 5 Complete the crossword puzzle by using the clues to fill in the blanks.

**Across**

- Instrument used to make the cell appear larger.
- This refers to how much larger or smaller something is when compared to its actual size.
- Anything being studied or observed is referred to as the \_\_\_\_\_.
- A magnifying glass held by the hand.
- Glassware used for mounting specimens.
- The building block of all living things.
- The drawing off of or absorption of excess water and stain.
- The number of times an item of a particular value occurs within the data.