

# Section A: Living Organisms in the Environment

## A1: An Introduction to Living Organisms

- 1 All living organisms display the following characteristics EXCEPT
- (A) excretion (A)
  - (B) breathing (B)
  - (C) reproduction (C)
  - (D) movement (D)
- 2 Which of the following are used by scientists to classify living organisms?
- I Visible characteristics
  - II Molecular structure of DNA
  - III Body size
  - IV Developmental patterns
- (A) I and II only (A)
  - (B) III and IV only (B)
  - (C) I, II and IV only (C)
  - (D) I, III and IV only (D)
- 3 Which of the following groups consists of species that are most closely related?
- (A) A family (A)
  - (B) A phylum (B)
  - (C) A genus (C)
  - (D) A class (D)

## A1: An Introduction to Living Organisms (cont.)

Items 3–4 refer to the following organisms.



4 The organisms could be classified using

I number of pairs of legs

II number of body segments

III presence or absence of antennae

(A) I only

(B) III only

(C) I and II only

(D) I, II and III

(A)

(B)

(C)

(D)

5 Organisms W and Y are

(A) insects

(B) crustaceans

(C) arachnids

(D) myriapods

(A)

(B)

(C)

(D)

6 The following are characteristics of members of the Prokaryotae kingdom EXCEPT

(A) they are unicellular organisms

(B) their cells have cell walls

(C) their DNA is not enclosed in a nuclear membrane

(D) they possess mitochondria

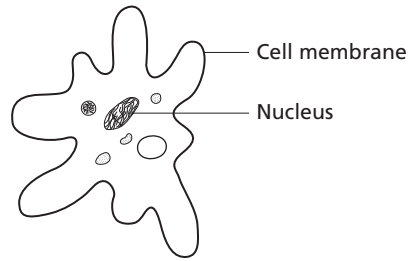
(A)

(B)

(C)

(D)

Item 7 refers to the following organism.



**7** To which kingdom does the organism belong?

- (A) Prokaryotae
- (B) Protoctista
- (C) Fungi
- (D) Plantae

- (A)
- (B)
- (C)
- (D)

**8** Which of the following pairs of phrases is correct?

	<b>Reptiles</b>	<b>Amphibians</b>	
(A)	Have a dry, waterproof skin with scales	Have a moist, non-waterproof skin with scales	(A)
(B)	Lay eggs with a rubbery shell	Eggs have a hard shell	(B)
(C)	Larvae develop in water	Larvae have gills for breathing	(C)
(D)	Eggs are laid on land	Eggs are laid in water	(D)

**9** The following statements are true EXCEPT

- (A) The leaves of dicotyledons are usually long and narrow.
- (B) The leaves of monocotyledons have parallel veins.
- (C) Savannah grass is a monocotyledon.
- (D) The seeds of the pride of Barbados plant have two cotyledons.

- (A)
- (B)
- (C)
- (D)